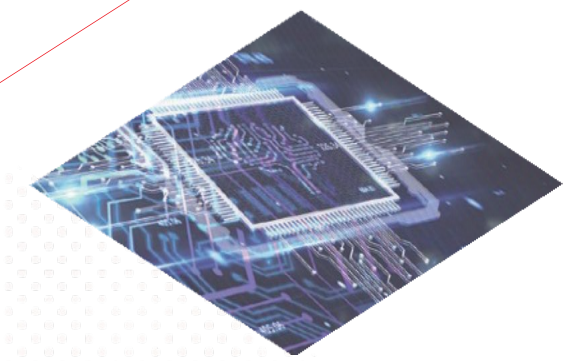




Giving shape to shape to excitement by bringing people and technology together.



❖ Name: Ryoden Corporation

❖ Date established: April 22, 1947

❖ Corporate Officers:

Representative Director of Board

Director of Board

Director of Board Senior Vice President

Director of Board Senior Executive Officer

External Director

External Director

External Director

Director and Audit and Supervisory Committee Member

External Director and Audit and Supervisory Committee Member

External Director and Audit and Supervisory Committee Member

Managing Executive Officer

Managing Executive Officer

Senior Executive Officer

Senior Executive Officer

Senior Executive Officer

Katsuyuki Tomizawa

Shunichi Higashi

Kazumoto Yogosawa

Yasuhiro Shibata

Hideki Matsuo

Goro Fujiwara

Yuka Ogasawara

Hirozou Tomomori

Noriko Sekiguchi

Thomas Witty

Yasumaru Tokiwa

Shigechika Motoyama

Hiroshi Hiraide

Tetsuji Sorita

Keiichi Yaji

Senior Executive Officer

Senior Executive Officer

Senior Executive Officer

Executive Officer

Executive Officer

Executive Officer

Executive Officer

Executive Officer

Executive Officer

Executive Officer

Executive Officer

Executive Officer

Executive Officer

Shinji Inazawa

Norihiko Yamamoto

Noriyuki Shimizu

Takamasa Nitta

Keiichi Akashi

Koichi Imaishi

Tomoyuki Sugai

Naoki Kasano

Satoshi Asahina

Yuuichirou Fujiyoshi

Harumitsu Aihara

Satoshi Asahina

3

❖ Message from the President

5

❖ Ryoden's Unique Business Model

7

❖ Ryoden's Global Network

9

❖ Ryoden's Future Growth Path

❖ Capital: ¥10,3429,008,875 (as of March 31, 2025)

❖ Listing: Prime Market, Tokyo Stock Exchange

❖ Employees: 1,451 (consolidated, as of March 31, 2025)

❖ Net sales: ¥215,790 million (FY ending March 2025, consolidated)

❖ Domestic network: 31 locations

❖ Overseas network: 21 locations

❖ Affiliated companies: 4 companies

❖ Main lines of business: Factory automation systems

Cooling & heating/building systems

Electronics

X-Tech (Cross Tech), smart agriculture, healthcare, ICT

❖ Principal dealer/agent for

Mitsubishi Electric Corp. / Nisshinbo Micro Devices Inc.

Isahaya Electronics Corp. / Cognex K.K.

Sanken Electric Co., Ltd. / Nichicon Corp.

Kubota Air Conditioner Co., Ltd. / Micron Japan, Ltd.

indie Semiconductor Truly Semiconductors LTD

Vishay Intertechnology, Inc. OmniVision Technologies, Inc.

Allegro MicroSystems, LLC

❖ URL <https://www.ryoden.co.jp>

Forging ahead toward our centenary as a business creation company

❖ Message from the President

Thank you for your continued support of the RYODEN Group. I am Katsuyuki Tomizawa, President.

The RYODEN Group started its new Mid- to Long-Term Management Plan “ONE RYODEN Growth 2029” from fiscal 2025.

We have positioned fiscal 2025 as the year in which we will lay the foundation for becoming “An excellent company that co-creates the future.” During this period of change, we will pursue our activities more vigorously than ever with the following three priorities.

Creation of new businesses : Based on RYODEN's DNA, we will keep creating business models beyond product sales to offer unique value to our customers.

Pursuit of high profitability through value enhancement : We will build a highly profitable business model by helping our customers increase their value. Through this, we aim to increase our enterprise value over the long term.

Achieve heterogeneity : Furthermore, we will build a highly profitable business model by contributing to the enhancement of our customers' value. Through these efforts, we aim to increase our corporate value over the long term and establish a unique market position by providing services and solutions that cannot be replicated by others.

Furthermore, by deepening technological innovation and global expansion, we will achieve sustainable growth while flexibly adapting to highly volatile market conditions. In particular, in our technology strategy, we will further strengthen our source of competitiveness by developing value-creating technologies to meet demand.

We believe that each of our employees is a creator of new business models. In each role, we will promote self-development and proactive challenges in order to translate the changes we are responsible for into concrete actions.

As society undergoes rapid change, the RYODEN Group is committed to achieving steady progress by seizing these changes as opportunities for growth. We ask for your continued understanding and support as we contribute to the development of a sustainable society and further enhance our enterprise value.

Representative Director and President

Katsuyuki Tomizawa



Ryoden's Unique Business Model

The 4 Core Businesses and 3 New Businesses Underpinning Ryoden

Four Core Businesses

❖ Factory Automation Systems



We deliver high-value-added solutions that make the manufacturing process smarter and more efficient. To that end we do joint research with academia and draw on the knowledge of our tactical technology divisions. Our offerings range from factory automation controllers, drive units, and numerically controlled equipment to robots, laser machining equipment, and AI vision systems. With this extensive lineup, we can serve all your factory needs, whether boosting productivity, conserving energy, or saving manpower.

Mitsubishi Electric Collaborative Robot (MELFA ASSISTA)



Mitsubishi Electric laser processing machine



Mitsubishi Electric sequencer

❖ Cooling & Heating Systems



Our solutions run the gamut, from selling facilities and equipment for commercial buildings, manufacturing plants, and distribution centers to designing and installing air conditioning systems and clean rooms. We can help you save energy as well. We offer ideas for achieving a safe, comfortable interior. Besides developing eco-friendly air-conditioned and low-temperature environments and heat mitigation strategies, these include implementing efficient building management and ZEB (Net Zero Energy Buildings).

三菱電機 DD



Mitsubishi Electric packaged air conditioning

Kubota Air Conditioner targeted air conditioning unit

❖ Building Systems



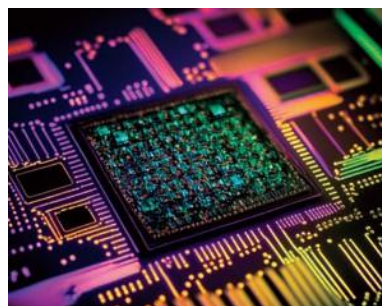
We support your building plans by delivering value added across the board, starting with critical facilities. We coordinate the entire process, from installing Mitsubishi elevators and other key equipment to ensuring safety and security and developing environmental and energy-saving features. Working with our partners, we recommend the facilities and systems best tailored to your requirements.

Order Made Elevator NEXCUBE



Mitsubishi Electric observation elevator

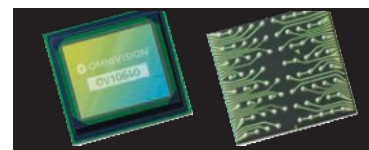
❖ Electronics



We operate on the cutting edge of the constantly evolving electronics industry, offering semiconductors and devices optimized to the customer. We deliver solutions that meet today's ever more sophisticated needs.



Mitsubishi Electric SiC power modules



OMNIVISION CMOS sensors

Three New Businesses (X-Tech)

❖ Smart Agriculture



Our next-generation farm services are helping society achieve food sustainability. Smart Agri Platform, Ryoden's proprietary next-generation farm service, delivers true value to companies entering the next-generation agriculture field.



Next-Generation Plant Factory, BlockFARM

❖ Healthcare



The integrated medical imaging system "RIDERS" enables centralized management of all images within a medical facility. Screen integration across devices not only allows data to be shared; it also delivers greater safety, security, and efficiency while creating a better training environment. Totalpack IT, a service supporting DX for medical institutions, offers flat-rate system costs. By packaging IT equipment and leveraging the cloud for data management, we reduce installation and operational costs through a monthly flat-rate model, while ensuring peace of mind with a long-term warranty.



Medical information system (simulated image)

❖ ICT



Your ICT environment is the foundation of your business, and we cover all the bases. We offer a multivendor selection of products and systems optimized to your needs. These range from video management systems, RFID solutions, and security solutions to servers and other hardware, as well as network equipment.



Video camera solution FlaRevo

Ryoden's Global Network

Domestic Japanese Network

◆ HEAD OFFICE

5-1 Kojimachi, Chiyoda-ku, Tokyo 102-0083
TEL: 03-5396-6111

◆ EAST JAPAN EXECUTIVE OFFICE

5-1 Kojimachi, Chiyoda-ku, Tokyo 102-0083
TEL: +81-3-5396-6176

◆ RYODEN-Lab.

12F, Sunshine City Annex Bldg., 3-3-5 Higashi-Ikebukuro, Toshima-ku, Tokyo 170-0013
TEL: 03-5396-6140

◆ NISHITOKYO BUSINESS OFFICE

6F, Hachioji Tosei Bldg., 5-15 Yokoyamacho, Hachioji-shi, Tokyo 192-0081
TEL: 050-9002-5871 FAX: 042-649-3838

◆ YOKOHAMA BUSINESS OFFICE

8F, Kannai ST Bldg., 1-4-1 Onocho, Naka-ku, Yokohama-shi, Kanagawa 231-0015
TEL: 045-264-7180 FAX: 045-641-2302

◆ SAPPORO BUSINESS OFFICE

8.3 Square Kita Bldg. 8F, 3-32 Kita 8-jo Nishi, Kita-ku, Sapporo-shi, Hokkaido 060-0808
TEL: 050-9002-5018 FAX: 050-3133-4806

◆ ASAHIKAWA BUSINESS OFFICE

Asahikawa Sanjo Midoribashi Bldg. 3F, 9-Hidari-1 3-jo Dori, Asahikawa-shi, Hokkaido 070-0033
TEL: +81-50-9002-2564 FAX: +81-50-3133-4806

◆ TOKACHI BUSINESS OFFICE

TRAD Tokachi Bldg. 5F, 11-18-1 Odori Minami, Obihiro-shi, Hokkaido 080-0010
TEL: 050-9002-2565 FAX: 050-3133-4806

◆ HAKODATE BUSINESS OFFICE

Asahi Plaza Base Hakodate 1F, 11-7 Shinonome-cho, Hakodate-shi, Hokkaido 040-0036
TEL: 050-9002-2566 FAX: 050-3133-4806

◆ SENDAI BUSINESS OFFICE

4F, Ichiban-cho-Square Bldg., 1-16-23 Ichibancho, Aoba-ku, Sendai-shi, Miyagi 980-0811
TEL: 022-217-7357 FAX: 022-265-9507

◆ KORIYAMA BUSINESS OFFICE

3F, Tokyo Kaijo Nichido Bldg., 1-7-20 Choja, Koriyama-shi, Fukushima 963-8017
TEL: 050-9002-5015 FAX: 050-3133-4806

◆ IWAKI BUSINESS OFFICE

2F, Fuji Bldg., 1-4-6 Taira Aiyamachi, Iwaki-shi, Fukushima 970-8026
TEL: 050-9002-5017 FAX: 050-3133-4806

◆ MAEBASHI BUSINESS OFFICE

484-2 Furuichimachi, Maebashi-shi, Gunma 371-0844
TEL: 027-280-5511 FAX: 050-3133-4806

◆ UTSUNOMIYA BUSINESS OFFICE

5-27-13 Shukugo, Utsunomiya-shi, Tochigi 321-0945
TEL: 050-9002-5805/028-633-4231 FAX: 050-3133-4806

◆ CENTRAL JAPAN EXECUTIVE OFFICE

Nishiki Park Bldg., 2-4-3 Nishiki, Naka-ku, Nagoya-shi, Aichi 460-0003
TEL: 052-211-1211 FAX: 052-211-5705

◆ KANAZAWA BUSINESS OFFICE

Kanazawa Park Bldg., 3-1-1 Hirooka, Kanazawa-shi, Ishikawa 920-0031
TEL: 050-9002-3377 / 076-224-4102 FAX: 076-224-4108

◆ TOYAMA BUSINESS OFFICE

2F, Isaac Uozu Ekimae Bldg., 1-12-27 Kamimuraki, Uozu-shi, Toyama 937-0046
TEL: 050-9002-3377 FAX: 076-523-0358

◆ SHIZUOKA BUSINESS OFFICE

11F, Mizunomori Bldg., 14-1 Minamicho, Suruga-ku, Shizuoka-shi, Shizuoka 422-8067
TEL: 054-286-2212 FAX: 054-285-7415

◆ HAMAMATSU BUSINESS OFFICE

Shinzucho 245-1, Naka-ku, Hamamatsu-shi, Shizuoka 430-0911
TEL: 050-9002-6674 / 053-469-0570 FAX: 053-469-0580

◆ NUMAZU BUSINESS OFFICE

6F, Farce Numazu Bldg., 2-10-14 Otemachi, Numazu-shi, Shizuoka 410-0801
TEL: 050-9002-6678 / 055-963-5190 FAX: 055-963-0556

◆ WEST JAPAN EXECUTIVE OFFICE

Kintetsu Dojima Bldg., 2-2-2 Dojima, Kita-ku, Osaka 530-0003
TEL: 06-4797-3950 FAX: 06-4797-3800

◆ KYOTO SALES OFFICE

51 Benkeishicho, Sanjodori Gokomachi Nishiiru, Nakagyo-ku, Kyoto-shi, Kyoto 604-8082
TEL: 050-9002-4873 / 075-231-4394 FAX: 075-231-7066

◆ HIMEJI SALES OFFICE

9F, Himeji Daido Seimei Bldg., 135 Toyozawacho, Himeji-shi, Hyogo 670-0964
TEL: 050-9002-4877 / 079-287-2000 FAX: 079-287-2005

◆ HIROSHIMA BUSINESS OFFICE

8F, Hiroshima KS Bldg., 5-7 Hatchobori, Naka-ku, Hiroshima-shi, Hiroshima 730-0013
TEL: 082-227-6481 FAX: 082-211-0047

◆ FUKUYAMA BUSINESS OFFICE

6F, Fukuyama Bldg., 1-1-24 Kasumicho, Fukuyama-shi, Hiroshima 720-0812
TEL: 050-9002-6673 / 084-923-6393 FAX: 084-923-6344

◆ TAKAMATSU BUSINESS OFFICE

952-2 Nariaicho, Takamatsu-shi, Kagawa 761-8081
TEL: 087-885-3914 FAX: 087-885-3922

◆ EHIME BUSINESS OFFICE

3F, Meiji Yasuda Seimei Matsuyama Nibancho Bldg., 3-6-5 Nibancho, Matsuyama-shi, Ehime 790-0002
TEL: 050-9002-5592 FAX: 089-915-1523

◆ IMABARI BUSINESS OFFICE

1F, Vancool Kitahiyoshi, 1-1-10 Kitahiyoshi, Imabari-shi, Ehime 794-0054
TEL: 050-9002-5593 FAX: 0898-35-5603

◆ FUKUOKA BUSINESS OFFICE

10F, FukuokaFukoka Seimei Bldg., 3-6-11 Watanabedori, Chuo-ku, Fukuoka-shi, Fukuoka 810-0004
TEL: 092-736-5777 FAX: 092-736-5789

◆ NAGASAKI SALES OFFICE

2F, Nagasaki Station Daiichi Life Bldg., Nsizakamachi, Nagasaki-shi, Nagasaki 850-0031
TEL: 050-9002-4839 FAX: 050-3133-4844

◆ KUMAMOTO BUSINESS OFFICE

6F, Kumamoto Chuo Bldg., 66-7 Yamasakimachi, Chuo-ku, Kumamoto-shi, Kumamoto 860-0016
TEL: 050-9002-4840 / 096-327-2378 FAX: 096-327-2379

◆ KAGOSHIMA BUSINESS OFFICE

3F, Urban Square Kagoshima Bldg., 4-10 Kinseicho, Kagoshima-shi, Kagoshima 892-0828
TEL: 050-9002-4841 FAX: 050-3133-4844

Overseas Network

East Asia

[HONG KONG]

◆ RYOSHO HONG KONG COMPANY, LIMITED

Unit Nos. 01-03, Level 30, Tower1, Millennium City 1, No.388 Kwun Tong Road, Kwun Tong, Kowloon, Hong Kong TEL: +852-2861-0111 FAX: +852-2861-3960

[CHINA]

◆ RYOSHO ELECTRONICS (SHANGHAI) COMPANY, LIMITED SHENZHEN BRANCH

Room 1508, Shun Hing Square, Di Wang Commercial Centre, 5002 Shennan East Road, Shenzhen, China (Postal No:518008)
TEL: +86-755-8246-5800 FAX: +86-755-8246-5700

◆ RYOSHO ELECTRONICS (SHANGHAI) COMPANY, LIMITED

12F Mitsubishi Electric Automation Center 1386 Hong Qiao Rd, Changning, Shanghai, 200336, China
TEL: +86-21-6119-9066 FAX: +86-21-3135-2305

◆ RYOSHO ELECTRONICS (SHANGHAI) COMPANY, LIMITED DALIAN BRANCH

Room 2602, Tian An International Building, No.88, Zhong Shan Rd, Zhong Shan District, Dalian, 116001, China
TEL: +86-411-8230-4156 FAX: +86-411-8230-4153

◆ RYOSHO ELECTRONICS (SHANGHAI) COMPANY, LIMITED GUANGZHOU BRANCH

Room.2606, Nuode Center, NO.477 Hanxi Avenue East, Panyu District, Guangzhou, 511442 China
TEL: +86-20-8923-6872 FAX: +86-20-8923-6952

◆ RYOSHO ELECTRONICS (SHANGHAI) COMPANY, LIMITED CHENGDU BRANCH

Room 1709 Tower 1 East Hope Tianxiang Square No.530 Tianfu Avenue, Gaoxin District, Chengdu, 610041, China
TEL: +86-28-6633-0166 FAX: +86-28-6633-0617

◆ RYOSHO ELECTRONICS (SHANGHAI) COMPANY, LIMITED HEFEI SALES OFFICE

Room 1404 Building A Huabang ICC No.190 Qianshan Road, Zhongwu District, Hefei, 230031, China
TEL: +86-21-6119-9066 (SHANGHAI) FAX: +86-21-3135-2305 (SHANGHAI)

◆ RYOSHO ELECTRONICS (SHANGHAI) COMPANY, LIMITED XIAMEN SALES OFFICE

2210-2, 474 Xinglin Bay Business Operation Center, Jimei District, Xiamen, Fujian, 361000, China
TEL: +86-20-8923-6872 (Guangzhou) FAX: +86-20-8923-6952 (Guangzhou)

◆ RYOSHO ELECTRONICS (SHANGHAI) COMPANY, LIMITED TAIWAN

13F-1, No.207, Dunhua N. Rd., Songshan Dist., Taipei City 10595, Taiwan (R.O.C.)
TEL: +886-2-2546-5006 FAX: +886-2-2546-5069

[KOREA]

◆ RYOSHO KOREA COMPANY, LIMITED

(Magok-dong, Doosan The Land Park) C-718,719, 161-8, Magokjungang-ro, Gangseo-gu, Seoul, 07788, Korea
TEL: +82-2-2649-0228 FAX: +82-2-2649-0229

Europe

[GERMANY]

◆ RYOSHO EUROPE GmbH

Voltastrasse 1, 60486 Frankfurt am Main, Germany
TEL: +49-69-7958390-0 FAX: +49-69-7958390-29

Southeast Asia

[SINGAPORE]

◆ RYOSHO TECHNO SINGAPORE PTE LTD

12 WOODLANDS SQUARE 11-74 WOODS SQUARE SINGAPORE 737715
TEL: +65-6473-7118 FAX: +65-6479-8286

[THAILAND]

◆ RYOSHO (THAILAND) CO., LTD.

Unit 1507 Empire Tower 15th Floor, 1 South Sathorn Road Yannawa, Sathorn, Bangkok 10120 Thailand
TEL: +66-2-670-0385 FAX: +66-2-670-0389

◆ RYOSHO (THAILAND) CO.,LTD.SRIRACHABRANCH

4/222 Harbor Office Building, 5th Floor, Room 5D04, Moo 10, Sukhumvit Road,Thungskukha, Sriracha, Chonburi 20230 Thailand
TEL: +66-38-323470 FAX: +66-38-323471

[VIETNAM]

◆ RYOSHO VIETNAM CO.,LTD.

5Floor LINCO GROUP building 61A-63A Vo Van Tan St, Ward Vo Thi Sau, District 3, HCMC, VN
TEL: +84-28-3636-0430 FAX: +84-91-799-2704

[MALAYSIA]

◆ RYOSHO MALAYSIA SDN. BHD.

E-GATE, 1-5-29, LEBUH TUNKU KUDIN 2, 11700 GELUGOR, PENANG.
TEL: +604-372-1988

North America

[UNITED STATES]

◆ RYOSHO U.S.A., INC.

2025 Gateway Place, Suite 128, San Jose, CA 95110 USA
TEL: +1-408-474-7777

◆ RYOSHO U.S.A., INC. ATLANTA BRANCH

3555 Koger Boulevard, Suite 320 Duluth, GA 30096, U.S.A.
TEL: +1-770-242-606 FAX: +1-770-242-372

◆ RYOSHO U.S.A., INC. INDIANAPOLIS BRANCH

656 36th Street, Lafayette, Indiana 47905
TEL: +1-765-808-7979

◆ RYOSHO U.S.A., INC. DETROIT OFFICE

28175 Haggerty Road, Suite 128, Novi, MI 48377 U.S.A.
TEL: +1-248-994-2236 FAX: +1-248-994-2237

[MEXICO]

◆ Ryosho Mexico, S.A. de C.V.

Anillo Vial II Junipero Serra 2601 Interior 602, Residencial Juriquilla Santa Fe, Queretaro, Queretaro, Mexico, C.P.76230 TEL: +52-442-325-4545

Affiliated Companies in Japan

◆ TECHNO FORT CO., LTD.

HEAD OFFICE/TOKYO BRANCH OFFICE

South Shin-Otsuka Bldg. 4F
2-25-15 Minami-Otsuka, Toshima-ku
Tokyo 170-0005 Japan
TEL: 03-5396-6315 FAX: 03-6369-3412

OSAKA BRANCH OFFICE

2-7-33 Gakuencho, Settsu-shi, Osaka 566-0033
TEL: 050-9002-5872/072-652-1020
FAX: 072-652-1030

◆ SOWA TECHNICAL CO., LTD.

2-18-17 Omachihigashi, Asaminami Ward, Hiroshima City, Hiroshima 731-0101
TEL: 082-877-7770 FAX: 082-877-7790

◆ Block FARM, Inc.

2262-1 Nishinaka, Hara, Numazu City, Shizuoka 410-0312
TEL: 055-955-9400 FAX: 055-955-9500

◆ FARMSHIP, INC.

4F, Tokyo Midori Labo., 3-9-5 Nihonbashihamacho, Chuo-ku, Tokyo 103-0007
TEL: 03-5289-9601 FAX: 03-5289-9636

Ryoden's Future Growth Path

Ryoden Corporation was set up just after the end of the World War II in 1947. We started off as a Mitsubishi Electric sales agent, and in the 1970s, we ventured into business diversification as a technical trading company trading in semiconductors, elevators, and other equipment. After an era of rapidly globalizing our business from the 1990s, and as part of our second inauguration stage of business since 2010, we have been pursuing further corporate transformation with the aim of becoming a 100-year company.

